

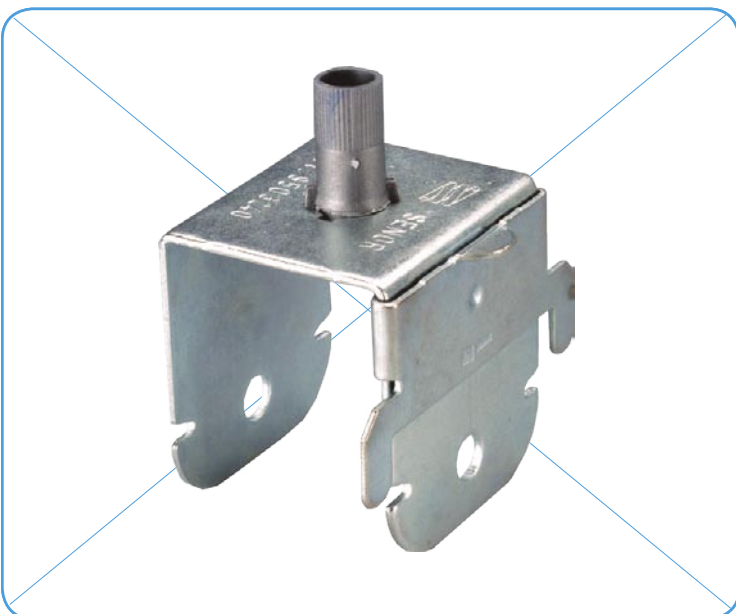
# MODEL H

## LEVELLING CLIP

Adapted to all 45 and 47 mm framings currently on the market.

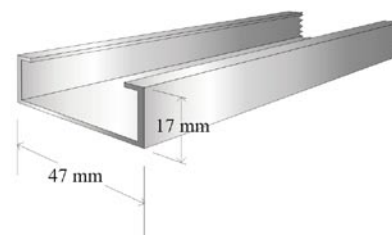
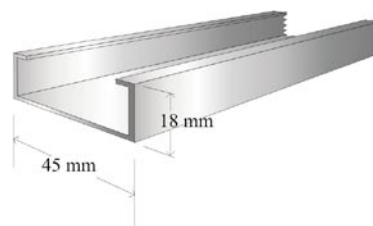
The mod. H levelling clip achieves a thermal break and facilitates levelling thanks to its rotating bush: a polypropylene coated steel nut (fire resistance M-0). The bush channels the threaded rod and enables the framing system to be levelled (when necessary) with a simple turn.

It has THE ONLY SECURITY DEVICE OF ITS KIND IN THE WORLD\* which helps in securing the framings from any alteration or deflection that might be produced by an excess load or due to fire exposure.



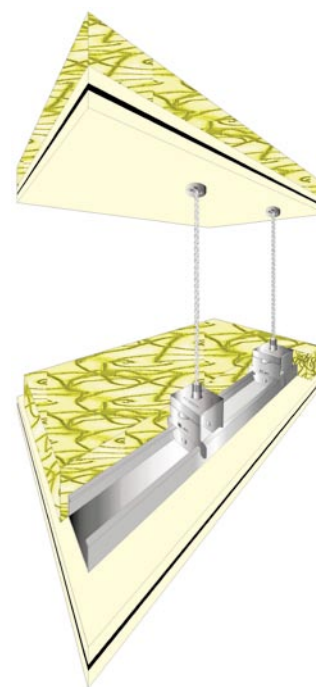
### FRAMMINGS/CHANNELS

Adapted for use with all 47mm sections



### RANGE OF APPLICATION

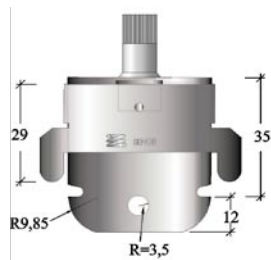
Acoustic, decorative suspended ceilings, etc.



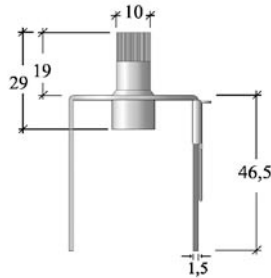
REF.	MODEL	FRAMING	PACKAGING	METRIC	*SEC. DEV.
HORQUILLA 47	H	TC 47	100 U/B	M-6	-
HORQUILLA 47 DS	H	TC 47	100 U/B	M-6	1DS

\* 1 DS = 1 security device.

**DIMENSIONS**  
**Mod. HORQUILLA (47/DS)**  
 (Maße in Millimetern)



FRONT VIEW



SIDE VIEW



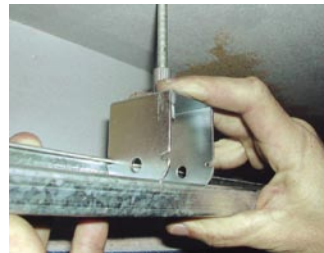
PLAN VIEW



1. Slide the clips into position on the rods hanging from the slab, passing the rod through the rotating thermal break bushing.



2. Use the bushing to level the clip.



3. Attach the clips to the furring channel by gently pressing them until they click into place.



4. Any levelling error can be corrected by adjusting the bushing, without having to release the furring channel.

**TESTS: MECHANICAL LOAD**

**Description/Make:**  
 RIEHLE Testing machine

**Code:**  
 ME 035009

**Traceability/Date of calibration:**  
 LABEIN / 13th May 1999

**Results obtained:**  
 Sample isolator MOD. H. Breaking load (kg) 210. **Failure mode: the bush becomes detached from the metal body.**



Test arrangement.



Sample subjected to load of 50 kg.



Sample subjected to load of 150 kg.



Failure mode 210 kg.