

# MODEL 3802/03

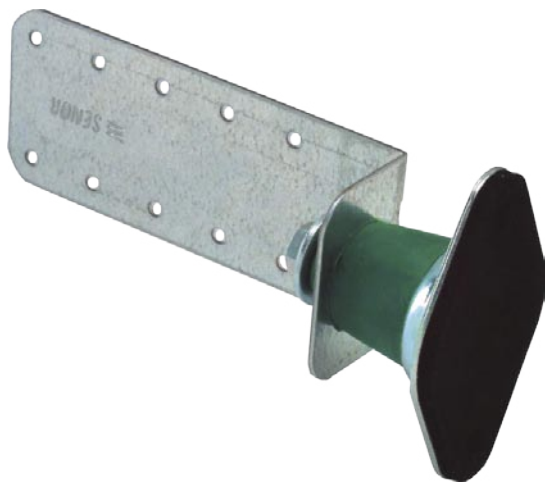
## WALL OR PANELLING ACOUSTIC ISOLATOR

Flexible mountings within an acoustic system are very important, particularly so as to prevent structural transmission and the rigidity of the wall, achieving an improved performance of the system.

Models 3802/3803 are the only insulators on the market with the double insulation function allowing the absorption of walls bulging and the sound pressure of the inside. They are designed so that the extension bracket works freely in the compression of the rubber in both directions, assisting its performance in reducing vibrations.

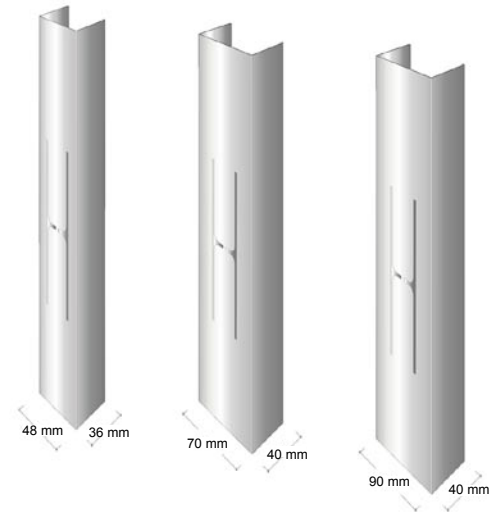
A security device is integrated to avoid collapse in case of fire: the insulators have a central axis threaded into a metal sole plate that is fixed to the wall, the EPDM body will eventually be destroyed.

The isolator is recommended for ceramic tile surfaces or cavity walls.



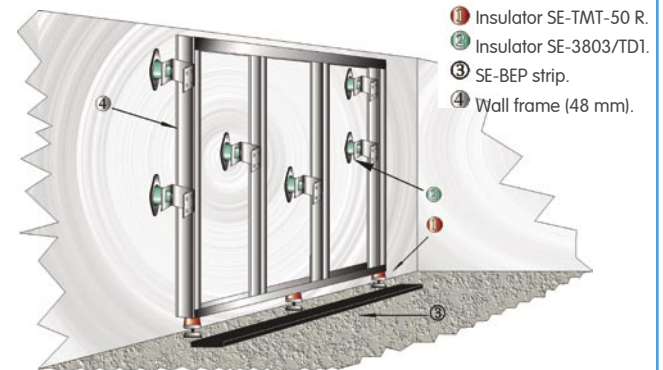
REF.	MODEL	THICKNESS (mm)	FRAMING	PACKAGING
SE-3802/TD1	3802	1,5	CHANNEL	50 U/B
SE-3803/TD1	3803	0,8	CHANNEL	50 U/B

### FRAMMINGS/CHANNELS

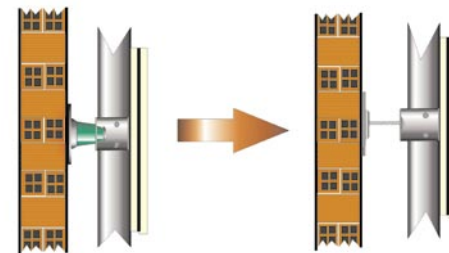


### RANGE OF APPLICATION

Walls and partitions



### Fire reaction properties

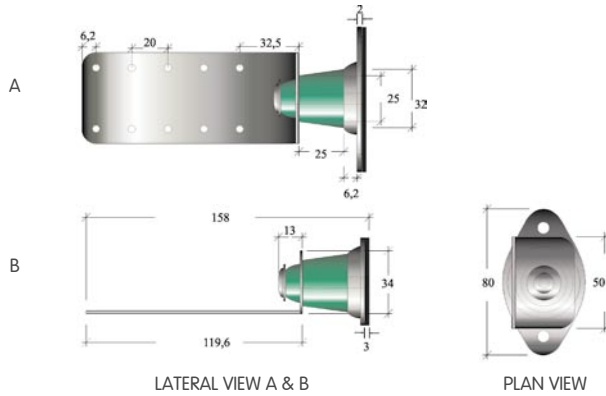


In the event of fire, the rubber will be destroyed, but the mounting will not

### DIMENSIONS

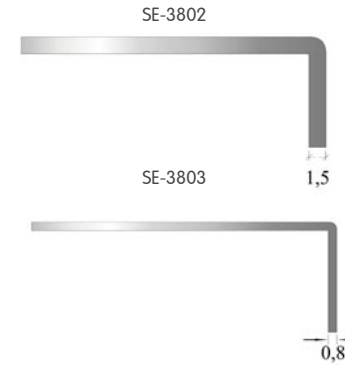
#### Mod. 3802/03

(Measurements expressed in millimetres)



### SHEET THICKNESS

(Measurements expressed in millimetres)



### OPTIMUM LOAD RANGE

#### EQUIPMENT AND RESULTS

##### Description/Make:

PCB Accelerometers Signal Amplifier  
 PCB Accelerometer  
 PCB Accelerometer  
 Calibrated weights  
 Calibrated weights  
 Dial indicator gauge  
 LDS Vibration Table

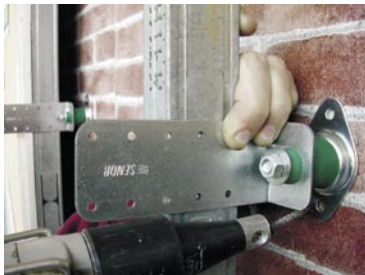
##### Code:

ME 084030  
 ME 072021  
 ME 072022  
 ME 031002  
 ME 031009  
 ME 012005  
 ME 075001

LOAD (Kg)	RESONANCE FREQUENCY (Hz)	RESONANCE AMPLIFICATION	ISOLATION THRESHOLD (Hz)
10 + equip.	8,76	3,56	11,65
22 + equip.	9,50	3,98	11,98
44 + equip.	9,98	6,56	12,65
45 + equip.	11,34	5,67	13,12

### MODE OF APPLICATION

#### STEP BY STEP



1



2



3