

MODEL 3900/01

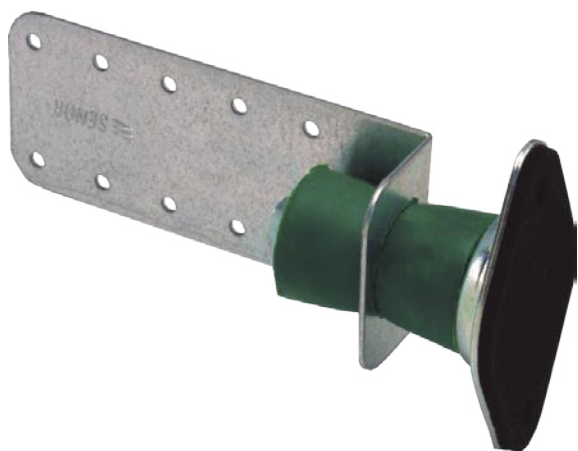
ACOUSTIC INSULATOR FOR HIGH WALLS AND PANNELLING

Models 3900/3901 are ideal for mounting high wall framings.

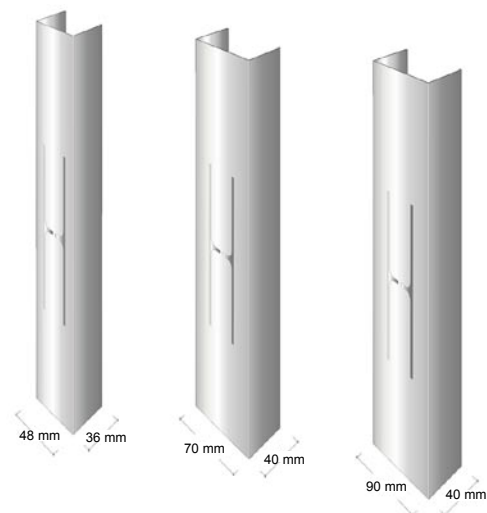
They are unique on the market: made out of two apposing rubber components that allow the extension bracket to work freely in both directions, enhancing its performance in reducing vibrations.

A security device is integrated to avoid collapse in case of fire: the insulators have a central axis threaded into a metal sole plate that is fixed to the wall, the EPDM body will eventually be destroyed.

The isolator is recommended for ceramic tile surfaces or cavity walls.

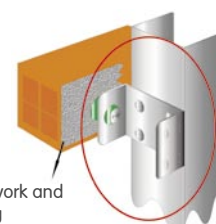
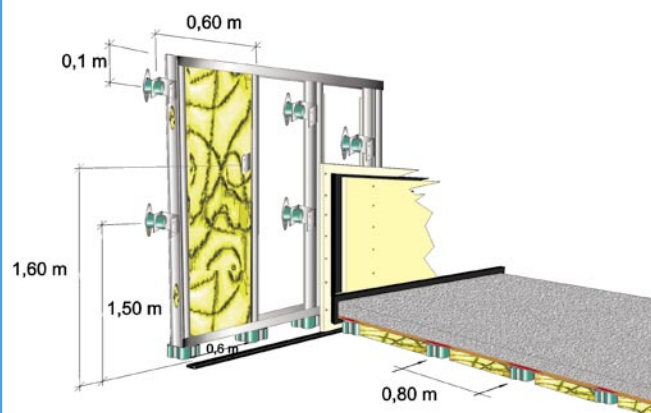


FRAMMINGS/CHANNELS



RANGE OF APPLICATION

High walls

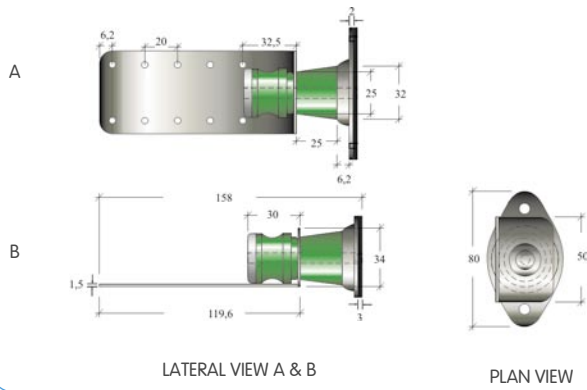


REF.	MODEL	THICKNESS (mm)	FRAMING	PACKAGING
SE-3900/TD2	3900	1,5	CHANNEL	50 U/B
SE-3901/TD2	3901	0,8	CHANNEL	50 U/B

DIMENSIONS

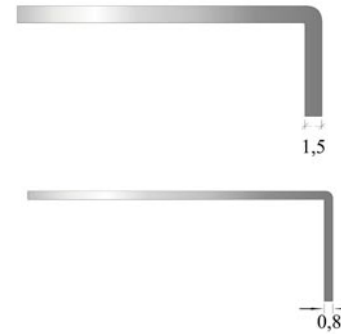
Mod. 3900/01

(Measurements expressed in millimetres)



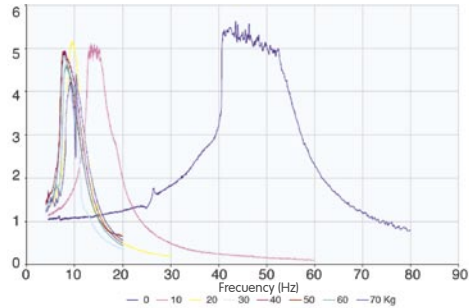
SHEET THICKNESS

(Measurements expressed in millimetres)

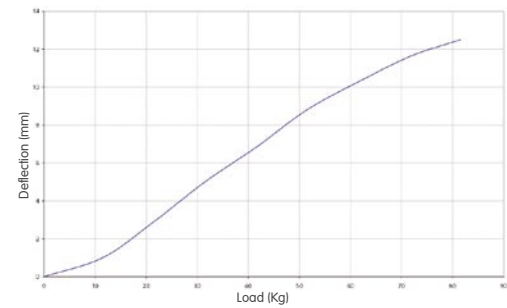


OPTIMUM LOAD RANGE

SE-3900-TD2



DEFLECTION



LOAD (Kg)	SCAN (Hz)	RESONANCE FREQUENCY (Hz)	RESONANCE AMPLIFICATION	ISOLATION THRESHOLD (Hz)
0	4,5-80	43,53	5,63	73,46
10	4,5-60	13,47	5,11	23,92
20	4,5-30	9,53	5,19	16,00
30	4,5-20	7,96	4,82	13,47
40	4-20	7,94	4,94	15,83
50	4-20	7,62	4,93	15,33
60	4-20	8,15	4,63	15,16
70	4-20	10,31	4,39	16,44

Equipment weight not included (≈ 1,5 Kg)

MODE OF APPLICATION STEP BY STEP

