

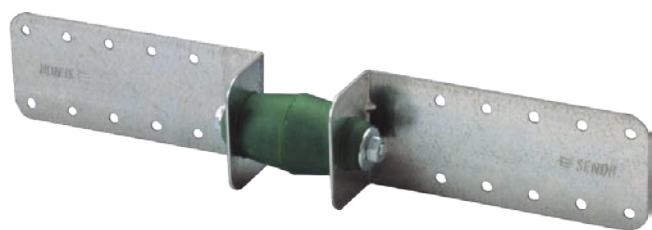
MODEL 7600/02

ACOUSTIC ISOLATOR FOR DOUBLE PARTITION WALLS

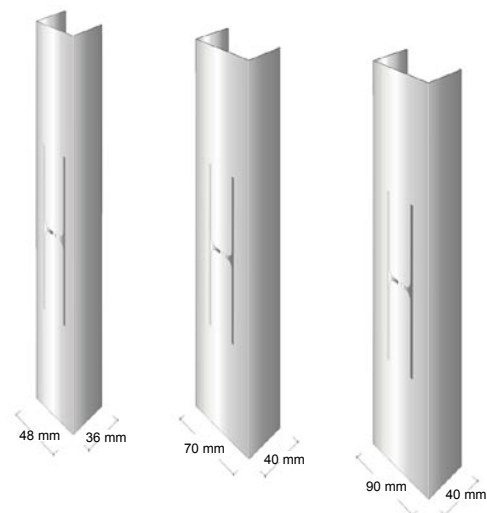
Flexible mountings within an acoustic system are very important, particularly so as to prevent structural transmission and the rigidity of the wall, achieving an improved performance of the system.

A security device is integrated to avoid collapse in case of fire: the insulators have a central axis threaded into a metal sole plate that is fixed to the wall, the EPDM body will eventually be destroyed.

It is highly effective thanks to its centrally threaded axis, joining the two opposing extension brackets, which are separated by an elastic rubber cylinder, enabling the brackets to function freely in compression of the rubber in both directions, thus improving performance at low frequencies, preventing possible stretching of the rubber.



FRAMMINGS/CHANNELS



RANGE OF APPLICATION

Acoustic walls

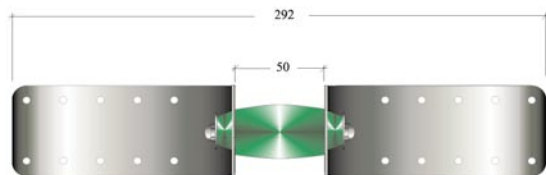


REF.	MODEL	THICKNESS (mm)	FRAMING	PACKAGING
SE-7600/TB2	7600	1,5	CHANNEL	50 U/B
SE-7602/TB2	7602	0,8	CHANNEL	50 U/B

DIMENSIONS

Mod. 7600/02

(Measurements expressed in millimetres)



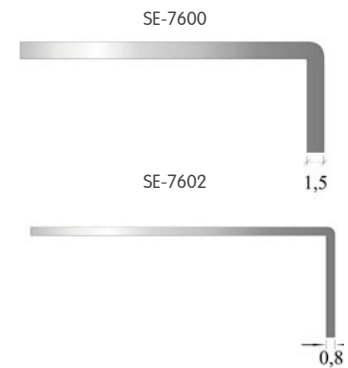
SIDE VIEW



PLAN VIEW

SHEET THICKNESS

(Measurements expressed in millimetres)



OPTIMUM LOAD RANGE

EQUIPMENT AND RESULTS

Description/Make:

Dial indicator gauge Tokio Sokki,
Dynamometric screwdriver Ton

Code:

ME 012020 / OE034TH5

Range:

50 mm / 3,92 Nm

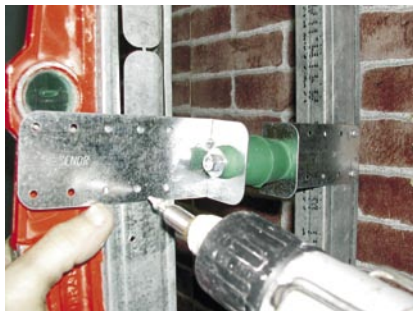
Results obtained:

Par (Nm)	Displacement (mm)
0,09	3,00
0,18	5,75
0,27	7,70
0,36	9,45
0,45	10,10

LOAD (Kg)	RESONANCE FREQUENCY (Hz)	RESONANCE AMPLIFICATION	ISOLATION THRESHOLD (Hz)
10 + equip.	8,00	3,48	11,41
22 + equip.	9,30	3,95	11,85
44 + equip.	9,50	6,30	12,10
43 + equip.	11,21	5,751	11,00

MODE OF APPLICATION

STEP BY STEP



1



2



3