

MODEL 9600/02

ACOUSTIC ISOLATOR FOR PARTITION WALLS

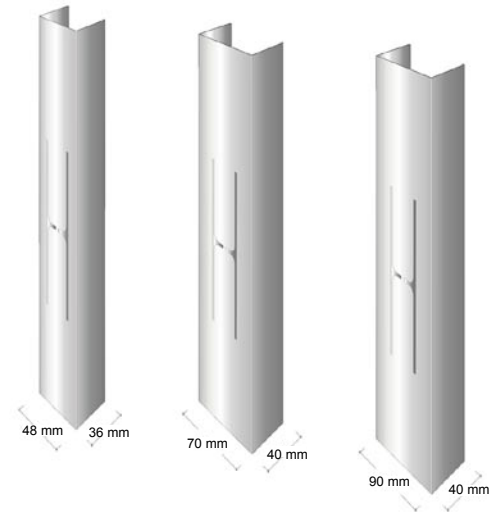
Flexible mountings within an acoustic system are very important, particularly so as to prevent structural transmission and the rigidity of the wall, achieving an improved performance of the system.

Models 9600/9602 are highly recommended insulators for absorption of vibrations produced by airborne and impact noise: the lowest frequencies of airborne noise tend to be in the range of 28 to 30 Hz and those produced by impact noise tend to be even lower. These models are specially indicated to prevent amplifications through the structures in premises where sound pressure levels of 100 to 105 dBA "medium/low frequencies" are generated.

Models 9600/9601 combine soft materials (EPDM rubber) with a steel springs, achieving better results in reducing vibrations, as it functions in both directions. It also incorporates a security system in case of fire in order to prevent complete collapse of the treatment.

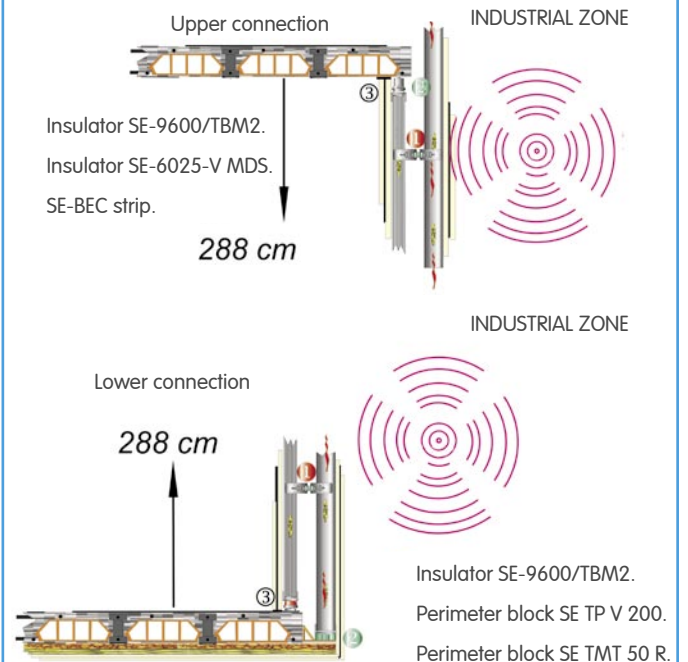


FRAMMINGS/CHANNELS



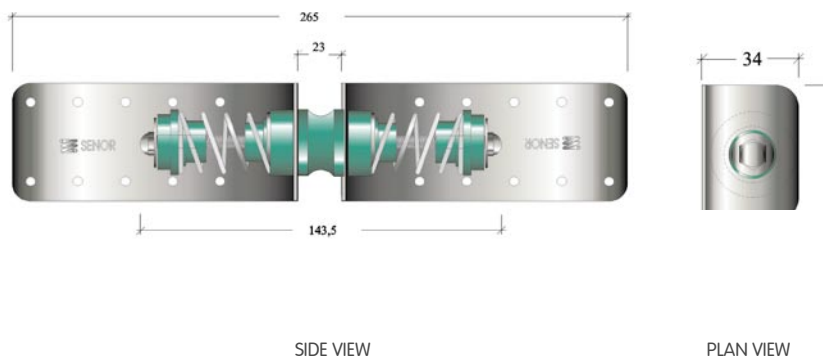
RANGE OF APPLICATION

Acoustic walls

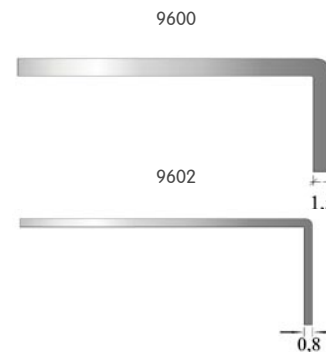


REF.	MODEL	THICKNESS (mm)	FRAMING	PACKAGING
SE-9600/TBM2	9600	1,5	CHANNEL	50 U/B
SE-9602/TBM2	9602	0,8	CHANNEL	50 U/B

DIMENSIONS Mod. 9600/02



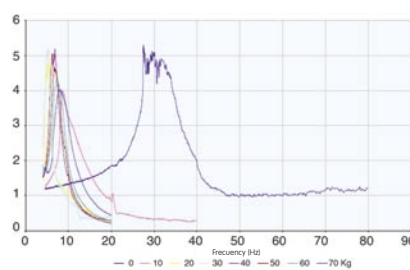
SHEET THICKNESS



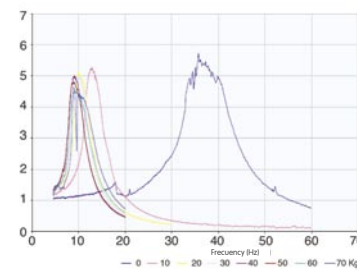
OPTIMUM LOAD RANGE

LOAD (Kg)	SCAN (Hz)	RESONANCE FREQUENCY (Hz)	RESONANCE AMPLIFICATION	ISOLATION THRESHOLD (Hz)
0	4,5-80	27,52	5,31	47,07
10	4,5-40	8,54	4,02	18,56
20	4-20	5,53	5,13	10,28
30	4-20	5,28	5,22	9,33
40	4-20	6,82	5,19	10,97
50	4-20	6,69	4,68	11,45
60	4-20	7,22	4,33	12,19
70	4-20	7,79	4,03	14,68

SE-9600/TBM2 (TRACTION)



SE-9600/TBM2 (COMPRESSION)



MODE OF APPLICATION STEP BY STEP



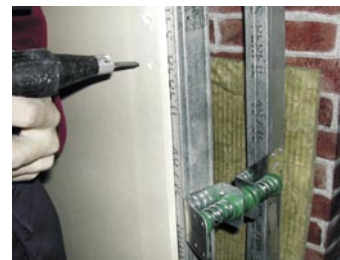
1



2



3



4