

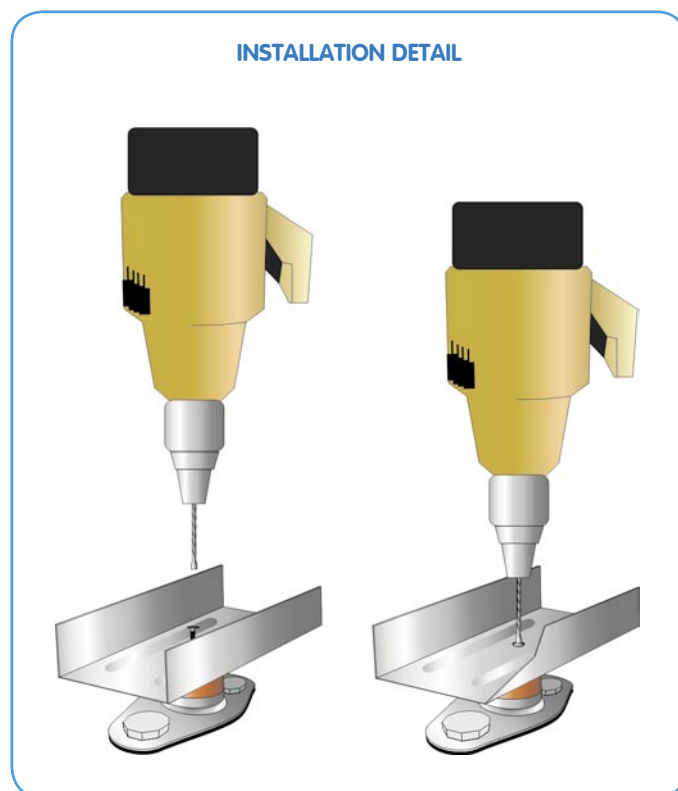
MODEL TMT

RUBBER PERIMETER BLOCK

For perimeter framing systems of 48 mm.

With a height levelling system to ensure even weight distribution on the supports, avoiding uneven strain due to imperfections in the flooring, it reaches optimal performance at low frequencies (Hz).

With an elastic base for supporting partitions or floating panels of laminated plaster, it has two holes for securing to the flooring. The upper part has a circular metal sole plate inlay for supporting and securing the rod.

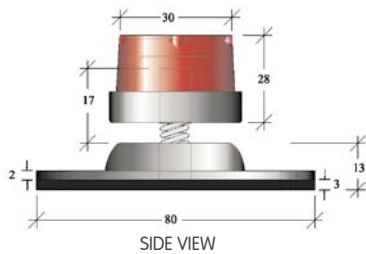


REF.	MODEL	PROFILE	PACKAGING	COLOR	MIN-MAX (Kg) LOAD
SE-TMT-50 R	TMT	48	25 U/B	■	20-60

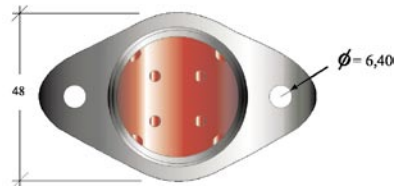
DIMENSIONS

Mod. TMT

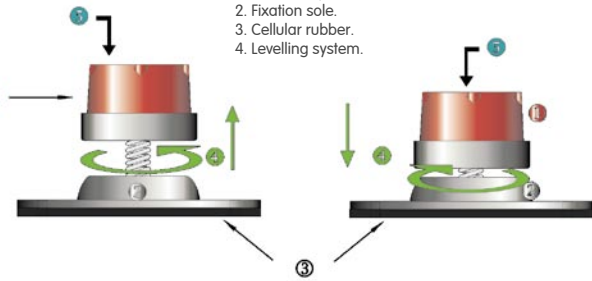
(Measurements expressed in millimetres)



SIDE VIEW



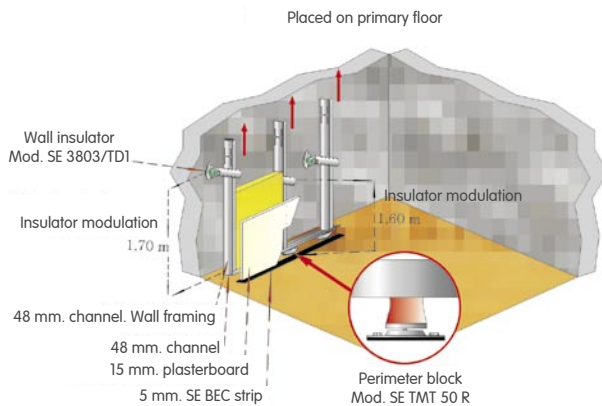
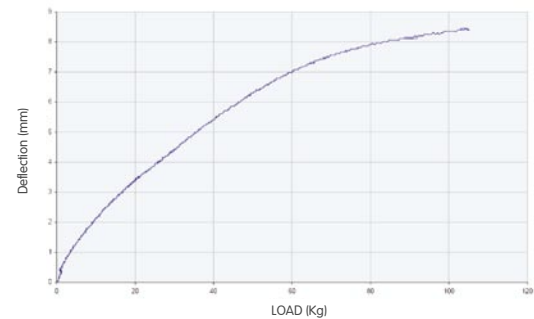
PLAN VIEW



1. EPDM body.
2. Fixation sole.
3. Cellular rubber.
4. Levelling system.

OPTIMUM LOAD RANGE

LOAD (Kg)	SCAN (Hz)	RESONANCE FREQUENCY (Hz)	RESONANCE AMPLIFICATION	ISOLATION THRESHOLD (Hz)
30	8,50-20	11,96	3,79	19,80
40	8,50-20	11,58	3,52	19,32
50	8,50-30	11,99	3,05	19,38



Description/Make:

RIEHLE Testing machine

Code:

ME 035006

Traceability/Date of calibration:

22 June 2001

Results obtained:

Sample isolator MOD. TMT-50R. Designed for loads ranging from 20 to 70 Kg. Results obtained are above standard, allowing loads up to 300 Kg before breakage. Rubber part has 20 mm.



1. -3 mm deflection at 20 Kg.



2. At 70 Kg we have a 6 mm deflection.



3. At 90 Kg we have a -8 mm deflection.